

MF700PN (PNEUMATIC TRAINER) PARTS LIST CATALOG

JULY 2014



MF700PN PNEUMATIC SYSTEM TRAINER

NOTE: Asterisk (*) in front of a part number indicates a component required to construct the most basic circuit.

WORKSTATION ASSEMBLY

FRAME ASSEMBLY

NOTE: *SINGLE station and DUAL station trainers use the same frame assembly (shown with panels)*

Includes:

- Four (4) wheel casters w/brakes
- Component storage compartment
- Electrical box w/receptacle plugs
- Writing station
- Hose caddy
- All-aluminum frame finished with Satin black powder-coating

P/N: *MF700PN-FA



WORKSTATION PANEL

Includes all mounting hardware.

Mount components vertically or horizontally with FPTI™'s unique component mounting design.

NOTE: *Two (2) panels required for a DUAL station trainer*

P/N: *MF700PN-02

SPECIFICATIONS -

Dimensions: 50.0" x 35.0"
(1270mm x 889mm).

Weight: 28 lbs (12.7 kg).

Quantity required: One (1) for a SINGLE trainer
Two (2) for a DOUBLE trainer



AIR COMPRESSOR

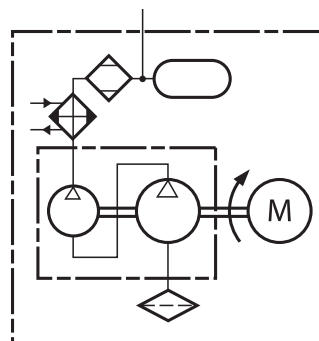
P/N: MF700PN-MAC

SPECIFICATIONS -

Capacity:	2.6 gallon. 2.0 HP 3.3 CFM @ 90 PSI
Pressure:	130 PSI (8.96 bar) - maximum @ 1720 RPM
Electrical:	120 VAC. 12.4 amps
Sound Rating:	40 decibels



ANSI/ISO SYMBOL:



NOTE: *Items shown in this catalog may be different to those actually offered. FPTI™ reserves the right to substitute items shown with items of similar or higher quality.*

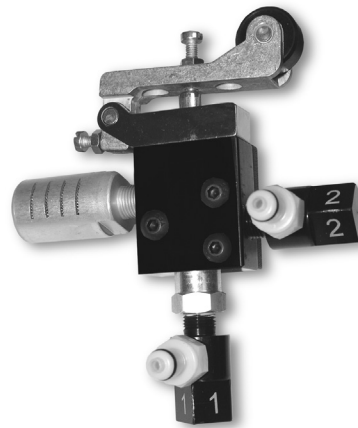
ROLLER-OPERATED - 2-position, 3-way

P/N: *MF700PN-40421-1000

SPECIFICATIONS -

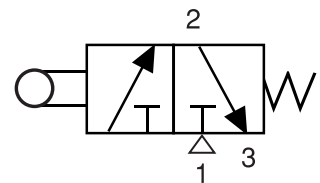
Type of actuation: Roller-operated.
Spool centering: Spring-centered.
Mounting type: Sub-plate mounted.
Connections: Two (2) quick-couplers.
Additional feature: Muffler/Filter.
 ANSI/ISO symbol tag.

Quantity required: Two (2) per panel/side



ANSI/ISO SYMBOL:

- Roller-operated
- 2-position
- 3-way
- Spring-centered
- Subplate-mounted
- Two (2) quick-couplers

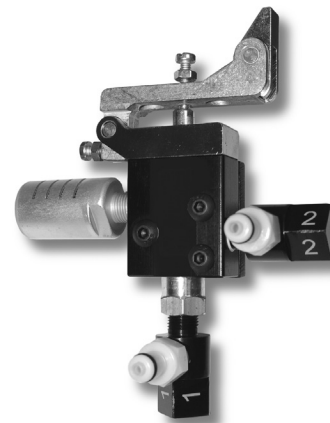


TRIP LEVER-OPERATED - 2-position, 3-way

P/N: MF700PN-40431-1000

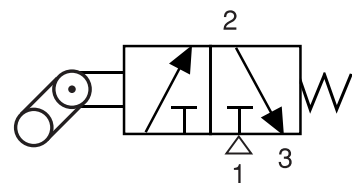
SPECIFICATIONS -

Type of actuation: One-way Trip lever.
Spool centering: Spring-centered.
Mounting type: Sub-plate mounted.
Connections: Two (2) quick-couplers.
Additional feature: Muffler/Filter.
 ANSI/ISO symbol tag.



ANSI/ISO SYMBOL:

- Trip lever-operated
- 2-position
- 3-way
- Spring-centered
- Subplate-mounted
- Two (2) quick-couplers



PUSH BUTTON-OPERATED NORMALLY CLOSED - 2-position, 3-way

P/N: MF700PN-41441-1000

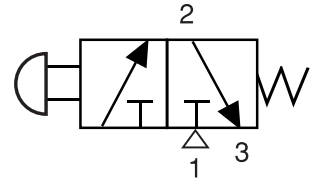
SPECIFICATIONS -

Type of actuation: Push button.
Spool centering: Spring-centered.
Mounting type: Sub-plate mounted.
Connections: Two (2) quick-couplers.
Additional feature: Muffler/Filter.
 ANSI/ISO symbol tag.



ANSI/ISO SYMBOL:

- Push button-operated
- 2-position
- 3-way
- Spring-centered
- Subplate-mounted
- Two (2) quick-couplers

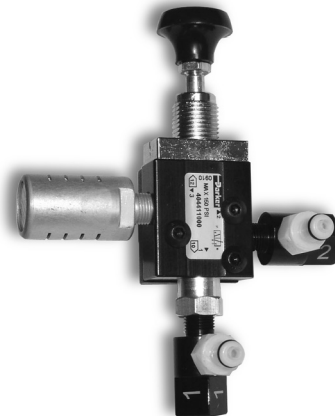


PUSH BUTTON-OPERATED NORMALLY OPEN - 2-position, 3-way

P/N: MF700PN-41441-1000-OP

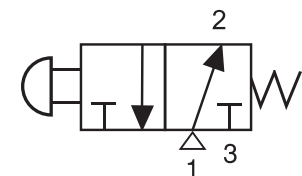
SPECIFICATIONS -

Type of actuation: Push button.
Spool centering: Spring-centered.
Mounting type: Sub-plate mounted.
Connections: Two (2) quick-couplers.
Additional feature: Muffler/Filter.
 ANSI/ISO symbol tag.



ANSI/ISO SYMBOL:

- Push button-operated
- 2-position
- 3-way
- Spring-centered
- Subplate-mounted
- Two (2) quick-couplers

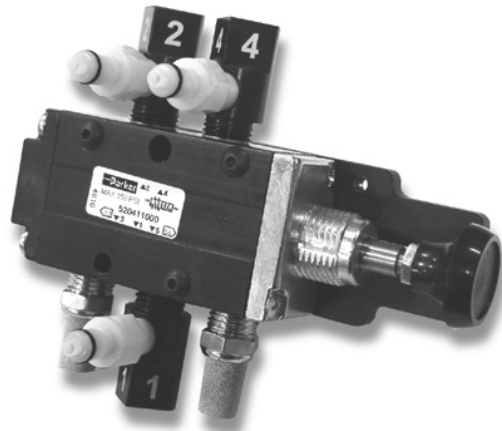


PUSH BUTTON-OPERATED- 2-position, 4-way

P/N: MF700PN-41041-1000

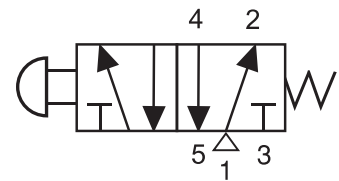
SPECIFICATIONS -

Type of actuation: Hand Lever-operated.
Spool centering: Spring-centered.
Mounting type: Sub-plate mounted.
Connections: Three (3) quick-couplers.
Additional feature: Muffler/Filter.
 ANSI/ISO symbol tag.



ANSI/ISO SYMBOL:

- Push button-operated
- 2-position
- 4-way
- Spring-centered
- Subplate-mounted
- Three (3) quick-couplers



HAND LEVER-OPERATED - 2-position, 3-way

P/N: *MF700PN-52481-1000

SPECIFICATIONS -

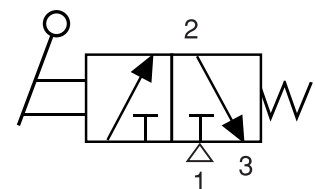
Type of actuation: Hand Lever-operated.
Spool centering: Spring-centered.
Mounting type: Sub-plate mounted.
Connections: Two (2) quick-couplers.
Additional feature: Muffler/Filter.
 ANSI/ISO symbol tag.

Quantity required: One (1) per panel/side



ANSI/ISO SYMBOL:

- Hand lever-operated
- 2-position
- 3-way
- Spring-centered
- Subplate-mounted
- Two (2) quick-couplers



HAND LEVER-OPERATED - 2-position, 3-way

P/N: MF700PN-52483-1000

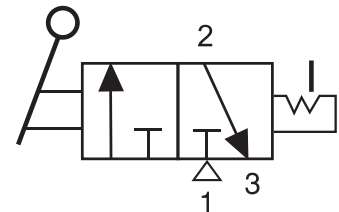
SPECIFICATIONS -

Type of actuation: Hand Lever-operated.
Spool centering: Detent manual return.
Mounting type: Sub-plate mounted.
Connections: Two (2) quick-couplers.
Additional feature: Muffler/Filter.
ANSI/ISO symbol tag.



ANSI/ISO SYMBOL:

- Hand lever-operated
- 2-position
- 3-way
- Detent manual return
- Subplate-mounted
- Two (2) quick-couplers

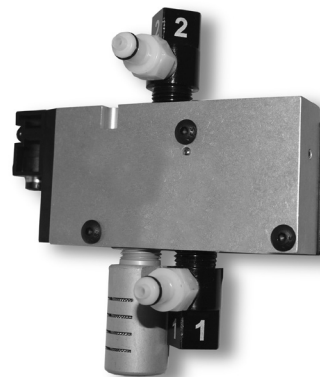


SINGLE REMOTE PILOT NORMALLY CLOSED - 2-position, 3-way

P/N: MF700PN-EZ2KN000YYA

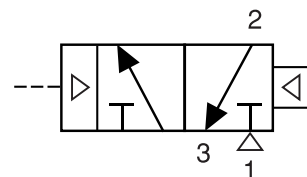
SPECIFICATIONS -

Type of actuation: Single remote pilot.
Spool centering: Air-return.
Mounting type: Sub-plate mounted.
Connections: Two (2) quick-couplers.
Additional feature: Muffler/Filter.
 ANSI/ISO symbol tag.



ANSI/ISO SYMBOL:

- Single remote pilot
- Normally closed
- 2-position
- 3-way
- Air-return
- Subplate-mounted
- Two (2) quick-couplers

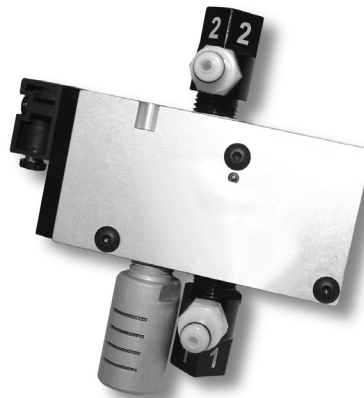


SINGLE REMOTE PILOT NORMALLY OPEN - 2-position, 3-way

P/N: MF700PN-EZ2LN000YYA

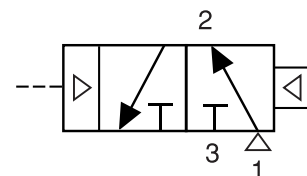
SPECIFICATIONS -

Type of actuation: Single remote pilot.
Spool centering: Air-return.
Mounting type: Sub-plate mounted.
Connections: Two (2) quick-couplers.
Additional feature: Muffler/Filter.
 ANSI/ISO symbol tag.



ANSI/ISO SYMBOL:

- Single remote pilot
- Normally open
- 2-position
- 3-way
- Air-return
- Subplate-mounted
- Two (2) quick-couplers



DIRECTIONAL CONTROL VALVES - PILOT-OPERATED

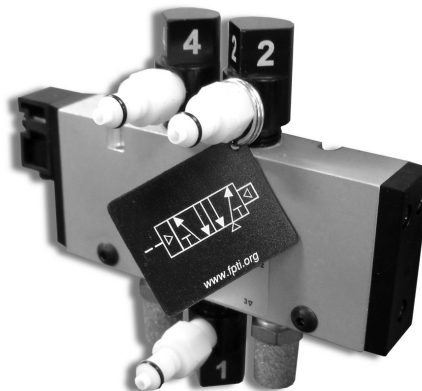
SINGLE REMOTE PILOT - 2-position, 4-way

P/N: *MF700PN-EZ23N000YYA

SPECIFICATIONS -

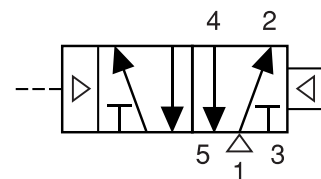
Type of actuation: Single remote pilot.
Spool centering: Air-return.
Mounting type: Sub-plate mounted.
Connections: Three (3) quick-couplers.
Additional feature: Two (2) Muffler/Filters.
 ANSI/ISO symbol tag.

Quantity required: One (1) per panel/side



ANSI/ISO SYMBOL:

- Single remote pilot
- 2-position
- 4-way
- Air-return
- Subplate-mounted
- Three (3) quick-couplers



DOUBLE REMOTE PILOT - 2-position, 4-way

P/N: MF700PN-EZ24N000YYA

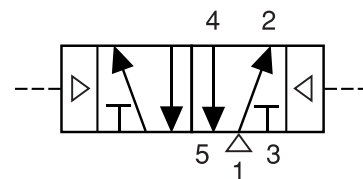
SPECIFICATIONS -

Type of actuation: Double remote pilot.
Mounting type: Sub-plate mounted.
Connections: Three (3) quick-couplers.
Additional feature: Two (2) Muffler/Filters.
 ANSI/ISO symbol tag.



ANSI/ISO SYMBOL:

- Double remote pilot
- 2-position
- 4-way
- Subplate-mounted
- Three (3) quick-couplers



DOUBLE REMOTE PILOT - 3-position, 4-way

P/N: MF700PN-EZ28N000YYA

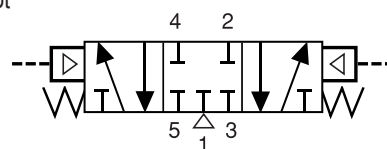
SPECIFICATIONS -

Type of actuation: Double remote pilot.
Spool centering: Spring-centered.
Mounting type: Sub-plate mounted.
Connections: Three (3) quick-couplers.
Additional feature: Muffler/Filter.
ANSI/ISO symbol tag.



ANSI/ISO SYMBOL:

- Double remote pilot
- 3-position
- 4-way
- Spring-centered
- Subplate-mounted
- Three (3) quick-couplers



DIRECTIONAL CONTROL VALVES - *SOLENOID-OPERATED*

SINGLE SOLENOID **NORMALLY CLOSED - 2-position, 3-way**

P/N: *MF700PN-EZ2GNBB549A

SPECIFICATIONS -

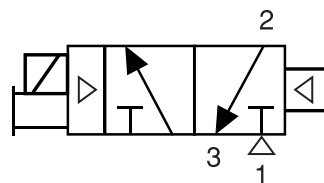
Type of actuation: Single solenoid-operated.
Spool centering: Air-return.
Mounting type: Sub-plate mounted.
Connections: Two (2) quick-couplers.
Additional feature: Muffler/Filter.
 ANSI/ISO symbol tag.

Quantity required: One (1) per panel/side



ANSI/ISO SYMBOL:

- Single solenoid
- Normally closed
- 2-position
- 3-way
- Air-return
- Subplate-mounted
- Two (2) quick-couplers



SINGLE SOLENOID **NORMALLY OPEN - 2-position, 3-way**

P/N: MF700PN-EZ2HNBB549A

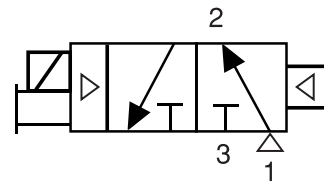
SPECIFICATIONS -

Type of actuation: Single solenoid-operated.
Spool centering: Air-return.
Mounting type: Sub-plate mounted.
Connections: Two (2) quick-couplers.
Additional feature: Muffler/Filter.
 ANSI/ISO symbol tag.



ANSI/ISO SYMBOL:

- Single solenoid
- Normally open
- 2-position
- 3-way
- Air-return
- Subplate-mounted
- Two (2) quick-couplers



DIRECTIONAL CONTROL VALVES - *SOLENOID-OPERATED*

SINGLE SOLENOID - 2-position, 3-way

P/N: MF700PN-EZ21NBB549A

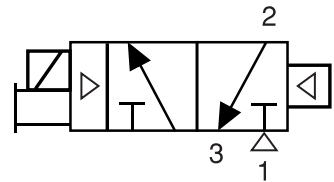
SPECIFICATIONS -

Type of actuation: Single solenoid-operated.
Spool centering: Air-return.
Mounting type: Sub-plate mounted.
Connections: Two (2) quick-couplers.
Additional feature: Muffler/Filter.
 ANSI/ISO symbol tag.



ANSI/ISO SYMBOL:

- Single solenoid
- 2-position
- 3-way
- Air-return
- Subplate-mounted
- Two (2) quick-couplers

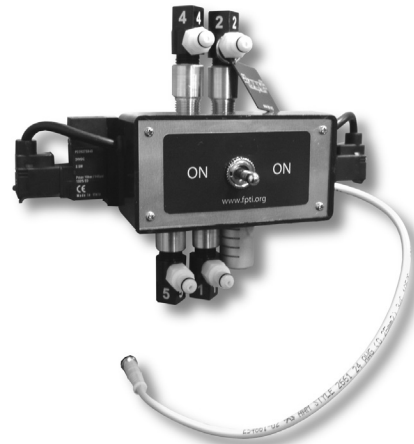


DOUBLE SOLENOID - 2-position, 4-way

P/N: MF700PN-EZ22NBB549A

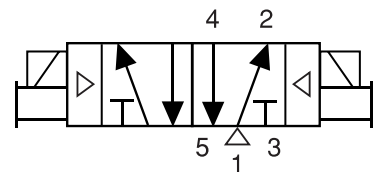
SPECIFICATIONS -

Type of actuation: Double solenoid-operated.
Mounting type: Sub-plate mounted.
Connections: Three (3) quick-couplers.
Additional feature: Muffler/Filter.
 ANSI/ISO symbol tag.



ANSI/ISO SYMBOL:

- Double solenoid
- 2-position
- 5-way
- Subplate-mounted
- Three (3) quick-couplers



DIRECTIONAL CONTROL VALVES - *SOLENOID-OPERATED*

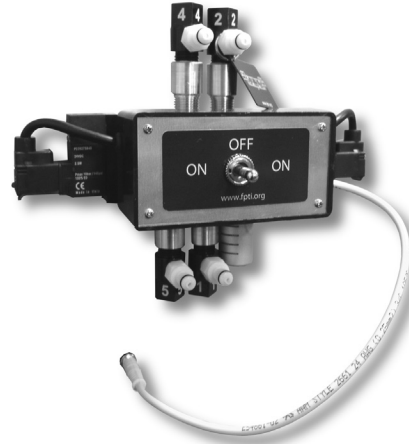
DOUBLE SOLENOID - 3-position, 5-way

P/N: *MF700PN-EZ25NBB549A

SPECIFICATIONS -

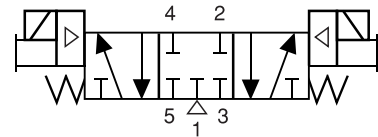
Type of actuation: Double solenoid-operated.
Spool centering: Spring-centered.
Mounting type: Sub-plate mounted.
Connections: Three (3) quick-couplers.
Additional feature: Muffler/Filter.
ANSI/ISO symbol tag.

Quantity required: One (1) per panel/side



ANSI/ISO SYMBOL:

- Double solenoid
- 3-position
- 5-way
- Spring-centered
- Subplate-mounted
- Three (3) quick-couplers



FLOW CONTROL VALVES

INLINE FLOW CONTROL VALVE

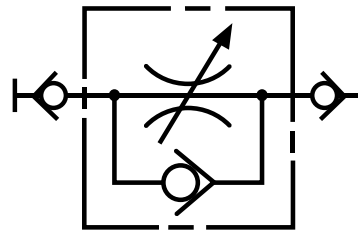
P/N: *MF700PN-FC806-2

SPECIFICATIONS -

Adjustment type: Knob.
Mounting type: Plate mounted.
Connections: Two (2) quick-couplers.
Additional feature: ANSI/ISO symbol tag.
Quantity required: Four (4) per panel/side



ANSI/ISO SYMBOL:



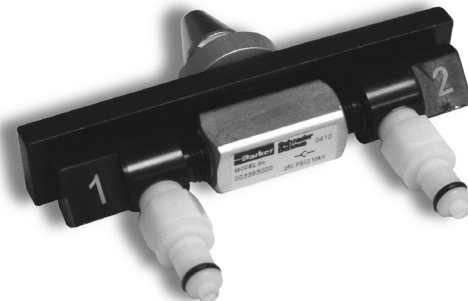
CHECK VALVE

P/N: MF700PN-003393000

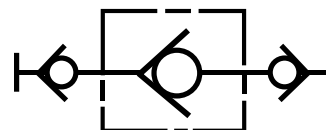
SPECIFICATIONS -

Construction: Brass body.
 Stainless steel poppet.
Operating Pressure: 250 PSIG (max.)
Operating Temp.: **0° to 140° F.
Mounting type: Plate mounted.
Connections: Two (2) quick-couplers.
Additional feature: ANSI/ISO symbol tag.

****** Ambient temperatures below freezing require moisture-free air. Ambient temperatures below freezing and above 180° require lubricants especially selected for suitability at these temperatures. Pneumatic valves should be used with filtered and lubricated air.



ANSI/ISO SYMBOL:



ACTUATORS

CYLINDER

Double-acting, single rod

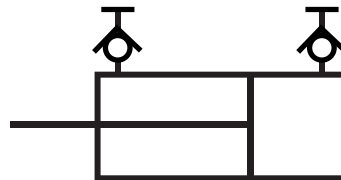
P/N: *MF700PN-1.50-DX-SR-10

SPECIFICATIONS -

Bore: 1.5" (38mm).
Stroke: 10" (254mm).
Construction: Stainless steel piston rods and double-rolled unitized body construction.
Standard Option: Pressure gauge ports.
Mounting: Plate mounted.
Connections: Two (2) quick-couplers.
Additional feature: ANSI/ISO symbol tag.
Quantity required: One (1) per panel/side



ANSI/ISO SYMBOL:



CYLINDER

Single-acting, single rod, spring-return

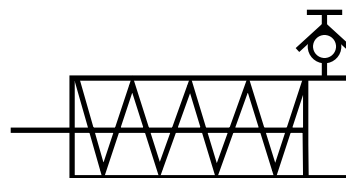
P/N: *MF700PN-1.50-NRP-SR-6

SPECIFICATIONS -

Bore: 1.5" (38mm).
Stroke: 6" (152.4mm).
Construction: Stainless steel piston rods and double-rolled unitized body construction.
Standard Option: Pressure gauge ports.
Mounting: Plate mounted.
Connections: One (1) quick-coupler.
Additional feature: ANSI/ISO symbol tag.
Quantity required: Two (2) per panel/side



ANSI/ISO SYMBOL:



ACTUATORS

CYLINDER

Single-acting, single rod pencil cylinder

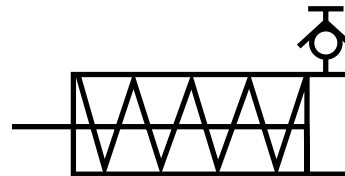
P/N: MF700PN-0.44-NR-SR-3.5

SPECIFICATIONS -

Bore: 7/16" (11.2mm).
Stroke: 3.5" (89mm).
Construction: Stainless steel piston rods and double-rolled unitized body construction.
Standard Option: Pressure gauge ports.
Mounting: Plate mounted.
Connections: One (1) hose-coupler.
Additional feature: ANSI/ISO symbol tag.



ANSI/ISO SYMBOL:



COMPONENTS

FILTER/REGULATOR/E-STOP COMBO

1/4" NPT INPUT COUPLER

P/N: *MF700PN-P31EA92EGMBN5P

SPECIFICATIONS -

Operating Pressure: Max. 150 PSIG (1000 KPa).

Operating Temp.: **125° F (52° C).

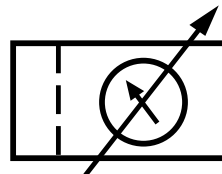
Additional feature: Muffler/Filter.
ANSI/ISO symbol tag.

Quantity required: One (1) per panel/side

** Ambient temperatures below freezing require moisture-free air. Ambient temperatures below freezing and above 180° require lubricants especially selected for suitability at these temperatures. Pneumatic valves should be used with filtered and lubricated air.



ANSI/ISO SYMBOL:



QUICK EXHAUST

1/8" NPT

P/N: *MF700PN-OR12B

SPECIFICATIONS -

Operating Pressure: Max. 150 PSIG (1000 KPa).

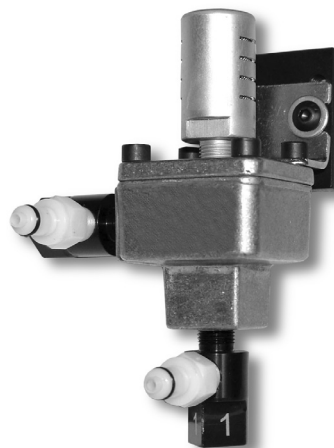
Min. 3 PSI (20 KPa).

Operating Temp.: **0° to 180° F (-18° to 80° C).

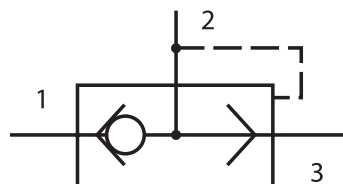
Additional feature: Muffler/Filter.
ANSI/ISO symbol tag.

Quantity required: One (1) per panel/side

** Ambient temperatures below freezing require moisture-free air. Ambient temperatures below freezing and above 180° require lubricants especially selected for suitability at these temperatures. Pneumatic valves should be used with filtered and lubricated air.



ANSI/ISO SYMBOL:



COMPONENTS

MUFFLER/FILTER

1/8" NPT and 1/4" NPT

P/N: MF700PN-ES12MC (1/8" NPT)

P/N: MF700PN-ES25MC (1/4" NPT)

SPECIFICATIONS -

Pipe thread: 1/8" NPT and 1/4" NPT.

Operating Pressure: Max. 250 PSIG (Air).

Operating Temp.: **0° to 300° F (0° to 149° C)

****** Ambient temperatures below freezing require moisture-free air. Ambient temperatures below freezing and above 180° require lubricants especially selected for suitability at these temperatures. Pneumatic valves should be used with filtered and lubricated air.



ANSI/ISO SYMBOL:



PRESSURE GAUGE

0 - 150 PSI

P/N: *MF700PN-PG-150

SPECIFICATIONS -

Size: 1.5" (38mm) dia. face.

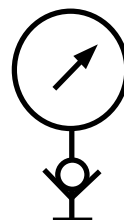
Case material: Plastic.

Connections: One (1) quick-coupler.

Quantity required: Three (3) per panel/side



ANSI/ISO SYMBOL:



PRE-MADE PNEUMATIC TUBING

30" (762 mm) Length

P/N: *MF700PN-HA-30

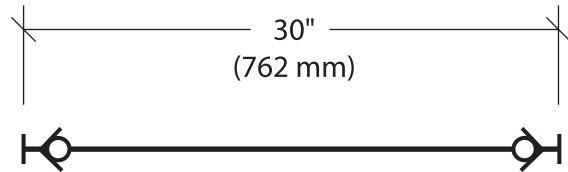
SPECIFICATIONS -

Tube type: Blue plastic
Size: 1/4" (6.35mm)
Length: 30" (762mm)
Tube end fittings: PPM121-2-MP

Quantity required: Eight (8) per panel/side



ANSI/ISO SYMBOL:



PNEUMATIC TUBING

100' roll (30.48 m)

P/N: *MF700PN-PE0417-100-B

SPECIFICATIONS -

Tube type: Blue plastic
Size: 1/4" (6.35mm)

Quantity required: 100 ft (30.48m)
 per panel/side



PNEUMATIC TUBING CUTTER

P/N: *MF700PN-TC-1

Quantity required: One (1) per panel/side



TUBE END FITTING/FEMALE QD

P/N: *MF700PN-PPM121-2-MP

SPECIFICATIONS -

Size: 1/4" Tube.

Quantity required: Twenty (20) per panel/side



TUBE END FITTING/MALE QD

P/N: MF700PN-PPM122-2-MP

SPECIFICATIONS -

Size: 1/4" Tube.



TEE FITTING

P/N: *MF700PN-364-PL-4

SPECIFICATIONS -

Size: 1/4" x 1/4" x 1/4"

Quantity: Ten (10) recommended.

Quantity required: Ten (10) per panel/side



TRAINING LITERATURE and MATERIALS

STUDENT TRAINER ACTIVITIES

(one per student recommended)

P/N: *HC-R007-TA

POWERPOINT CD-ROM & INSTRUCTOR GUIDE

(one per instructor recommended)

P/N: *HC-R007-TAi

THE LETHAL STRIKE -

Procedures for Properly Managing Injection Injuries DVD

P/N: HC-FPSI-001DVD

**MF700PN
(PNEUMATICS TRAINER)
PARTS LIST/ORDER FORM**

MF700PN PNEUMATIC SYSTEM TRAINER

WORKSTATION ASSEMBLY

ITEM DESCRIPTION	PART No.	QTY
FRAME ASSEMBLY Same frame for SINGLE or DUAL station.	*MF700PN-FA	<input type="checkbox"/>
WORKSTATION PANEL Includes all mounting hardware.	*MF700PN-02	<input type="checkbox"/>
AIR COMPRESSOR	MF700PN-AC	<input type="checkbox"/>
DIRECTIONAL CONTROL VALVES - <i>MANUAL</i>		
ROLLER-OPERATED - 2-position, 3-way	*MF700PN-40421-1000	<input type="checkbox"/>
TRIP LEVER-OPERATED - 2-position, 3-way	MF700PN-40431-1000	<input type="checkbox"/>
PUSH BUTTON-OPERATED - 2-position, 3-way	MF700PN-41441-1000	<input type="checkbox"/>
HAND LEVER-OPERATED - 2-position, 3-way	*MF700PN-52481-1000	<input type="checkbox"/>
HAND LEVER-OPERATED - 2-position, 3-way with Detent position	MF700PN-52483-1000	<input type="checkbox"/>
DIRECTIONAL CONTROL VALVES - <i>PILOT-OPERATED</i>		
SINGLE REMOTE PILOT (NORMALLY CLOSED) 2-position, 3-way	MF700PN-EZ2KN000YYA	<input type="checkbox"/>
SINGLE REMOTE PILOT (NORMALLY OPEN) 2-position, 3-way	MF700PN-EZ2LN000YYA	<input type="checkbox"/>
SINGLE REMOTE PILOT 2-position, 5-way	*MF700PN-EZ23N000YYA	<input type="checkbox"/>
DOUBLE REMOTE PILOT 2-position, 5-way	MF700PN-EZ24N000YYA	<input type="checkbox"/>
DOUBLE REMOTE PILOT 3-position, 5-way	MF700PN-EZ28N000YYA	<input type="checkbox"/>

MF700PN PNEUMATIC SYSTEM TRAINER

DIRECTIONAL CONTROL VALVES - *SOLENOID-OPERATED*

ITEM DESCRIPTION	PART No.	QTY
SINGLE SOLENOID (NORMALLY CLOSED) 2-position, 3-way	*MF700PN-EZ2GNBB549A	<input type="checkbox"/>
SINGLE SOLENOID (NORMALLY OPEN) 2-position, 3-way	MF700PN-EZ2HNBB549A	<input type="checkbox"/>
SINGLE SOLENOID 2-position, 3-way	MF700PN-EZ21NBB549A	<input type="checkbox"/>
DOUBLE SOLENOID 2-position, 5-way	MF700PN-EZ22NBB549A	<input type="checkbox"/>
DOUBLE SOLENOID 3-position, 5-way	*MF700PN-EZ25NBB549A	<input type="checkbox"/>
FLOW CONTROL VALVES		
INLINE FLOW CONTROL VALVE	*MF700PN-FC806-2	<input type="checkbox"/>
CHECK VALVE	MF700PN-003393000	<input type="checkbox"/>
ACTUATORS		
HYDRAULIC CYLINDER Double-acting, single rod	*MF700PN-1.50-DX-SR-10	<input type="checkbox"/>
HYDRAULIC CYLINDER Single-acting, single rod, spring-return	*MF700PN-1.50-NRP-SR-6	<input type="checkbox"/>
HYDRAULIC CYLINDER Single-acting, single rod, pencil cylinder	MF700PN-0.44-NR-SR-3.5	<input type="checkbox"/>
COMPONENTS		
FILTER/REGULATOR/E-STOP COMBO 1/4" NPT INPUT COUPLER	*MF700PN-P31EA92EGMBN5P	<input type="checkbox"/>
QUICK EXHAUST 1/8" NPT	*MF700PN-OR12B	<input type="checkbox"/>

MF700PN PNEUMATIC SYSTEM TRAINER

COMPONENTS

ITEM DESCRIPTION	PART No.	QTY
MUFFLER/FILTER 1/8" NPT	MF700PN-ES12MC	<input type="checkbox"/>
MUFFLER/FILTER 1/4" NPT	MF700PN-ES25MC	<input type="checkbox"/>
PRESSURE GAUGE 150 PSI	*MF700PN-PG150	<input type="checkbox"/>
AIR HOSE / FITTINGS / CONNECTORS / ACCESSORIES		
PRE-MADE PNEUMATIC TUBING 30" (762 mm) Length	*MF700PN-HA-30	<input type="checkbox"/>
PNEUMATIC TUBING 100' roll (30.48 m)	*MF700PN-PE0417-100-B	<input type="checkbox"/>
PNEUMATIC TUBING CUTTER	*MF700PN-TC-1	<input type="checkbox"/>
TUBE END FITTING/FEMALE QD	*MF700PN-PPM121-2MP	<input type="checkbox"/>
MALE QD	MF700PN-PPM122-2MP	<input type="checkbox"/>
TEE FITTING	*MF700PN-364-PL-4	<input type="checkbox"/>
TRAINING LITERATURE & MATERIALS		
STUDENT TRAINER ACTIVITIES	*HC-R007-TA	<input type="checkbox"/>
POWERPOINT CD-ROM & INSTRUCTOR GUIDE	*HC-R007-TAi	<input type="checkbox"/>
THE LETHAL STRIKE - Procedures for Properly Managing Injection Injuries DVD	HC-FPSI-001DVD	<input type="checkbox"/>

Distributed by:



2170 South 3140 West
West Valley City, UT 84119
PH: 801.908.5456
FX: 801.908.5734

<http://www.fpti.org>